



7.1.4: Geotagged Photograph of Rain Water Harvesting

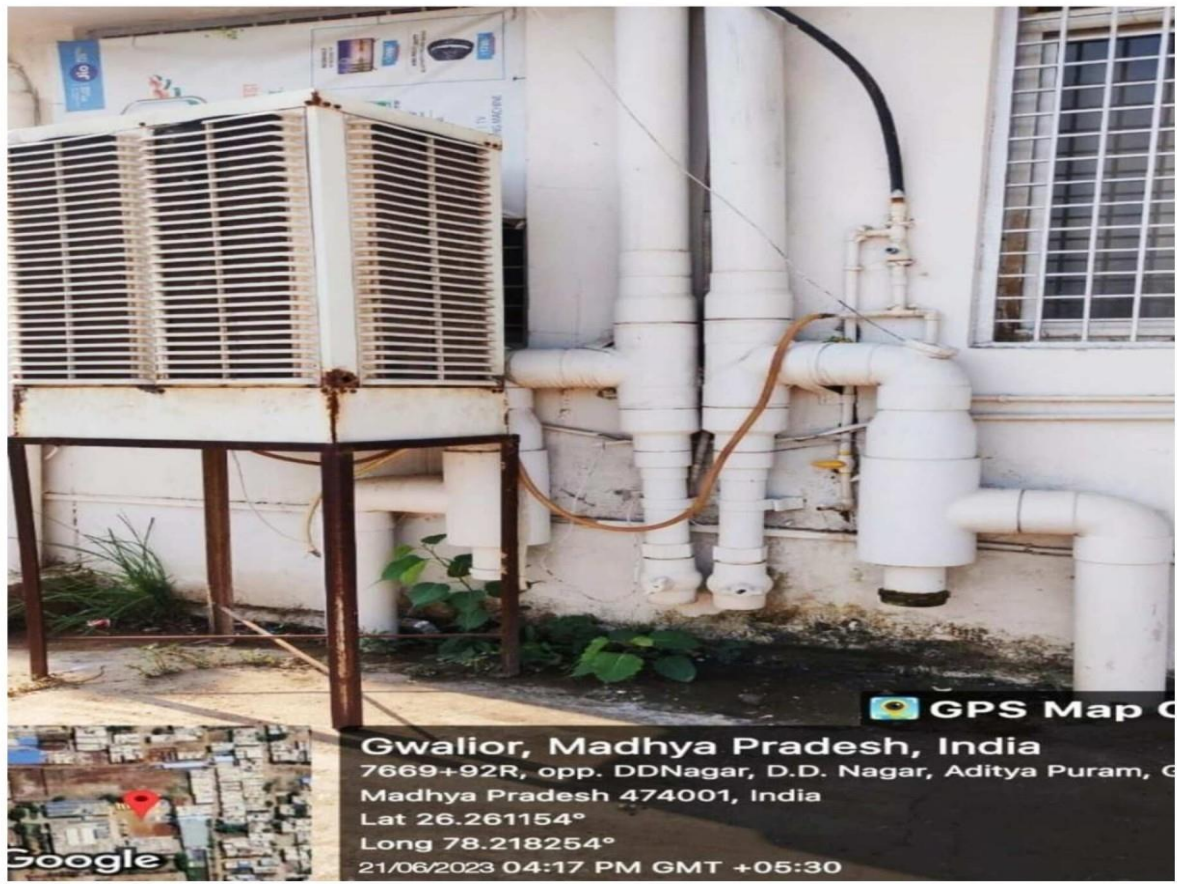
A. Rain water harvesting:

At our institute, we have implemented an efficient rainwater harvesting system to promote sustainability and conserve water. Large rooftops and designated surfaces serve as catchment areas, directing rainwater through a network of pipes into storage tanks. This collected water is used for, toilet flushing, and cleaning, significantly reducing our reliance on municipal water. Additionally, recharge borewells facilitate groundwater replenishment. This initiative not only conserves valuable water resources but also serves as an educational tool, fostering a culture of environmental responsibility within our community.



Rain water harvesting pipe System Block B

7.1.4: Geotagged Photograph of Rain Water Harvesting



Rain water harvesting Pipe System at Block A

7.1.4: Geotagged Photograph of Borewell Recharge

Borewell Recharge

At Our Institute, We Have Implemented a Bore Well Recharge System to Sustainably Manage Groundwater Resources. Rainwater is Directed into These Wells Through a Network of Pipes and Filtration Systems, Allowing It to Percolate and Replenish the Underground Water Table. This Practice Not Only Helps in Maintaining the Groundwater Levels but Also Ensures a Reliable Water Supply for The Campus, Promoting Long-term Water Security and Environmental Stewardship.



Borewell recharge in Ground A

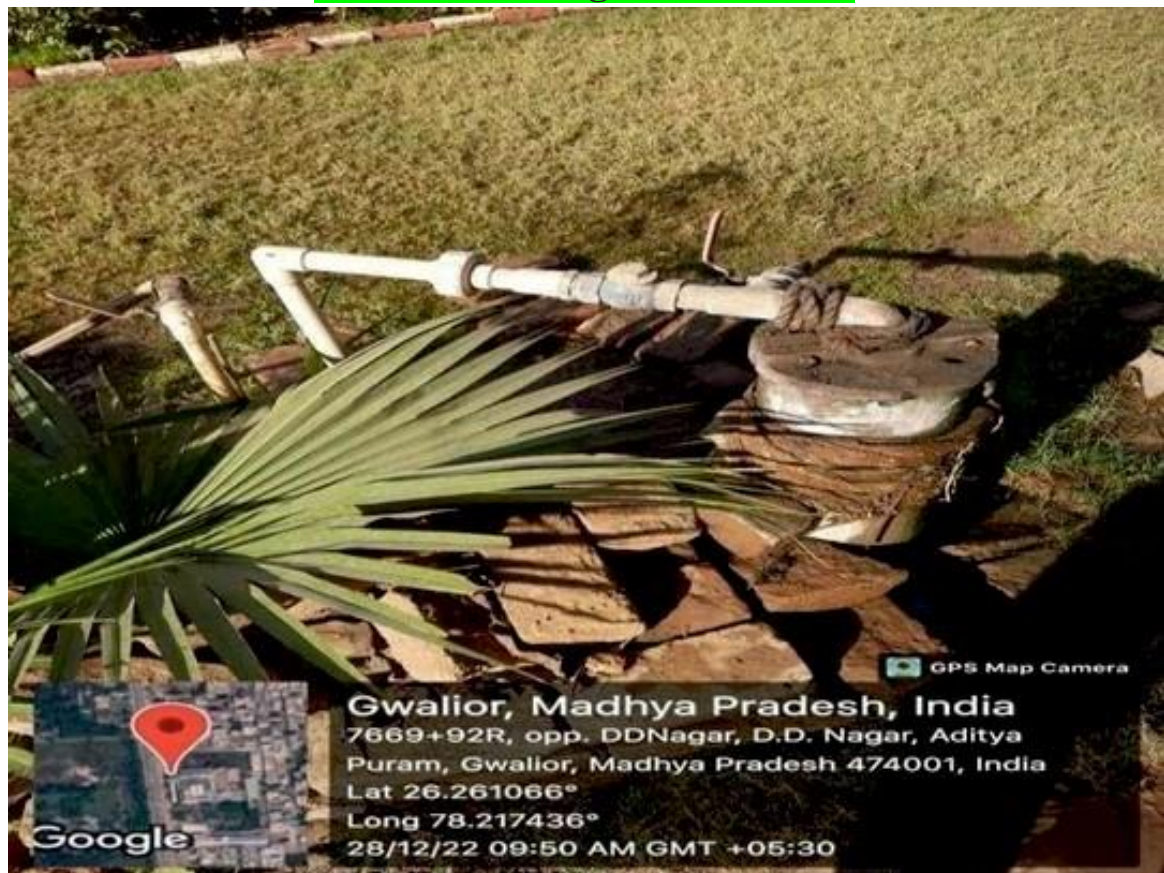


Borewell recharge in Ground B

7.1.4: Geotagged Photograph of Borewell



Borewell recharge in Ground A



Borewell recharge in Ground C

7.1.4: Geotagged Photograph of Water Tanks

- A. **WATER TANKS:** Institute has underground and storage water tanks to store water for various purposes e.g. Drinking, Cleaning, Gardening etc.



Water tanks at Rooftop of Block C

7.1.4: Geotagged Photograph of Water Tanks



Underground Water tank in front of Block C Ground Area



Underground Water tank in front of Block C Ground Area

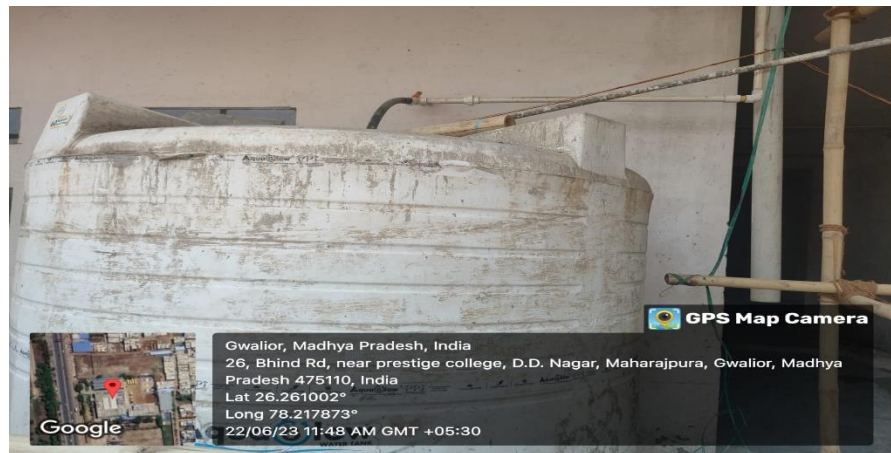
7.1.2: Geotagged Photograph of RO Waste Water Recycling



RO Waste Water collection in the Tank for Reuse



Connecting Pipe System



Waste Water collection Tank

7.1.4: Geotagged Photograph of Maintenance of Water Bodies & Distribution System

Maintenance of Water Distribution System:

The institution's water supply system is well-established and properly installed, ensuring a reliable source of water for all campus facilities. Regular maintenance and monitoring are conducted to maintain optimal performance and compliance with safety standards, contributing to a healthy and sustainable environment for students and staff.



Waste Supply Pipe System in Block B

7.1.4: Geotagged Photograph of Maintenance of Water Distribution System



Water Distribution Pipe System in Block A